



Southern Hospitality

Greening the Westin Savannah Photography by DM Photography

For the past four years, Lisa Roth and her team at Montgomery Roth Architecture & Interior Design have been renovating the Westin Savannah Harbor Golf & Spa, transforming its original traditional Southern décor to a more luxurious and contemporary look. Most recently, the firm completed the lobby. “The idea was to increase functionality and develop a carefully refined high end luxurious feel by focusing on clean simple lines, while preserving the distinct architectural beauty of the property, thus creating a subtle calm and timeless harmony,” Roth says.

With that in mind, the designers increased seating, creating niches of space where guests can relax, added organic elements (a warm color palette and leaf-inspired and geometrical patterned carpet), employed lush materials, installed large windows to highlight the harbor view, and used contrasting paints to highlight the hotel’s existing architectural molding details. Friezes were treated as artwork and were painted pristine white, while the property’s large collection of fine art and artwork from local artists were placed throughout the lobby.

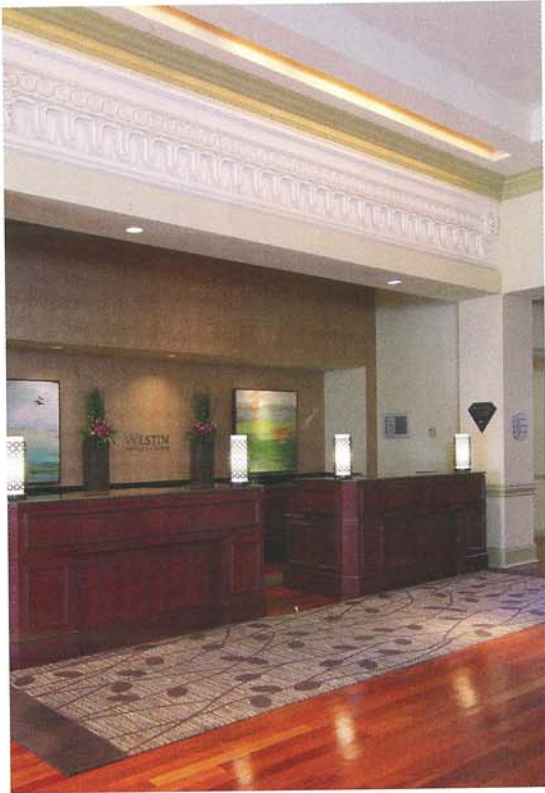
More than just make the space look good, Roth and her team decided to make it green by partnering with two



Opposite page and above:
Two views of the seating
niches in the Westin
Savannah lobby.

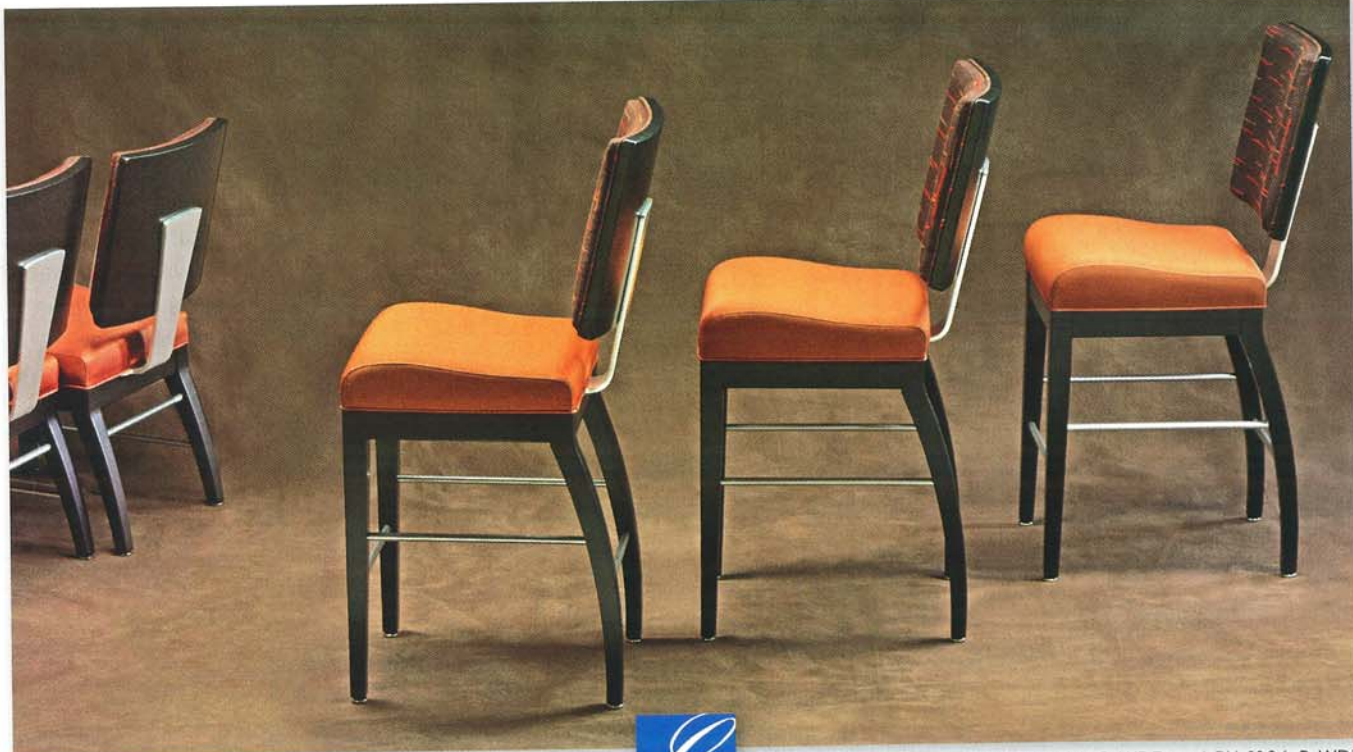
companies, JLF/lone meadow and Nano-Tex. Roth immediately chose JLF/lone meadow since the company uses SFI (Sustainable Forestry Initiative) Certified lumber from managed forests, water based finishing with minimal VOC emissions, and recycled, post-consumer steel springs, clips, and staples in its furniture. And even more, “we liked the lines of their furniture and since we were on a compressed schedule, we liked that their factories were in the U.S.,” Roth says.

And after being introduced to Nano-Tex at the Hospitality Design Summit last year, Roth wanted to try and do a project where all of the fabrics were treated with the company’s high performance technology that meet or exceed all environmental, health, and safety standards mandated by the Environmental Protection Agency, the Occupational Safety & Health Administration, and the Consumer Product Safety Commission in the U.S. She thought this was the perfect setting. “What I liked is that you can pick any fabric and have the technology to treat that fabric,” she says. And the collaboration worked: “The textile companies were very willing and excited to have their products qualified and used on this exciting project,” says Nano-Tex’s John Schroeter. >



Westin Savannah Harbor Golf & Spa
 Interior Design Firm Montgomery Roth Architecture & Interior Design,
 Houston/New Orleans
 Seating JLF/lone meadow
 Fabric Robert Allen, Kravet, Fabricut, Designtex, Valley Forge, Textus, and ArcCom
 Casegoods Allen Copley/D'Style, Lily Jack, Bernhardt, Vanguard Furniture,
 Drexel Heritage, Hickory Chair, and Cumberland Furniture
 Rugs Stark Carpet
 Lighting Robert Abbey and Circa Lighting
 Artwork Bob Fisher
 Window Treatments Quiltcraft ■

Left: Reception. Above:
 Artwork decorates the walls
 in one area of the lobby.



Chair Design by: Dougall Design, Pasadena, CA

Models PH-1106-C-WD7 and PH-1106-B-WD7



GASSER CHAIR COMPANY

Youngstown, OH 44505 • USA • 800.323.2234 • 330.759.2234 • Fax 330.759.9844 • www.gasserchair.com • sales@gasserchair.com

Photography by: Perspective Image • Seattle, WA