



THE ARCHED AREA SURROUNDING THE JADE RANGE IS THE FOCAL POINT OF CHARLES AND JULIE DAVENPORT'S KITCHEN.

THE WHITE STUFF

When the **right homeowners** meet the **right designers** and the **right whites** — the outcomes are calm, cool and collected.

BY LEE CUTRONE
PHOTOS BY EUGENIA UHL

CHARLES AND JULIE DAVENPORT

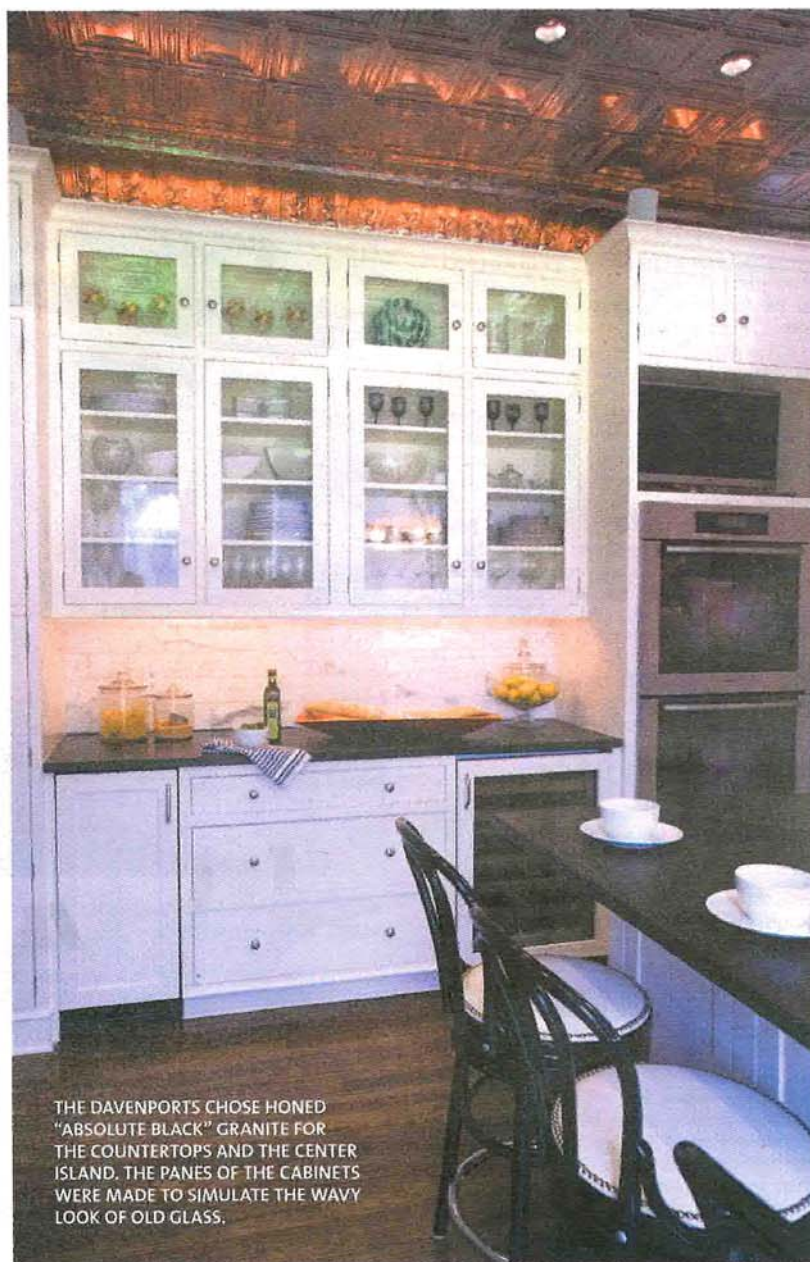
When you first see Charles and Julie Davenport's handsome black-and-white kitchen, it's obvious that it is magazine worthy. So it's not surprising to find out that the inspiration for it was in fact a show house kitchen that was pictured in *Traditional Home Magazine*.

"I wanted to find something I really liked, so I looked through magazines and found a picture and took it to Lisa," says Julie, who first met architect/designer Lisa Roth of Montgomery Roth Architecture & Interior Design through a mutual friend. It's not an exact replica, though, Roth created the Davenports' kitchen — which includes Calcutta marble, stainless steel, a pressed-tin ceiling and solid wood in-set cabinets — to accommodate their specific needs, work within the footprint of the house and be both modern and appropriate to New Orleans' traditional architecture.

The challenge was to turn a hall and a narrow, galley kitchen with a spiral staircase into a kitchen that looked like the magazine picture but also had enough room for a family of four. Roth, who outfitted the room with cabinets and appliances from Lagarde's, tackled the task by removing the spiral staircase (she replaced it with a traditional one accessed via a hall) and combining the tiny kitchen with additional square footage provided by a hall running alongside it. She made the most of every inch available by extending the cabinets upward and designed a roomy island with a slim, under-counter trough sink by Kohler, and seating and storage underneath. To achieve the look of subway tiles, 18-inch square floor tiles were cut down to measure 4'-by-18 inches and used in a running bond pattern.

Other distinctive features include the Davenports' selection of painted, glass-front cabinets instead of the stainless steel ones depicted in the magazine photo (with two young children — Will, 7, and Charlotte, 6 — they wanted an easy-to-clean surface that wouldn't show fingerprints); lighting under and above the cabinets, which illuminates the tin ceiling at night; stainless steel shelves on either side of the cook top; double ovens; a dishwasher and warming drawer by Miele; a flat-screen TV by Sharp; a refrigerator and a wine cooler by Sub-Zero; and large, operable casement windows that allow for wonderful views of the expansive backyard and pool. Soon to be added is an elevated terrace off the second-floor kitchen with stairs leading to the pool below.

"The kitchen is centered in the house and is truly the hub of their home," says Roth, whose firm primarily works with hospitality design. "With two small kids, it was very important that the design be functional, maintainable and child friendly. It is very rewarding for me to see families make it through the renovation process thrilled with the transformation." And indeed the homeowners are. Says Julie: "Everyone who helped design this did a great job bringing it to fruition."



THE DAVENPORTS CHOSE HONED "ABSOLUTE BLACK" GRANITE FOR THE COUNTERTOPS AND THE CENTER ISLAND. THE PANES OF THE CABINETS WERE MADE TO SIMULATE THE WAVY LOOK OF OLD GLASS.